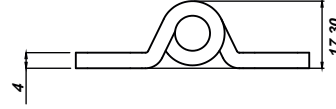


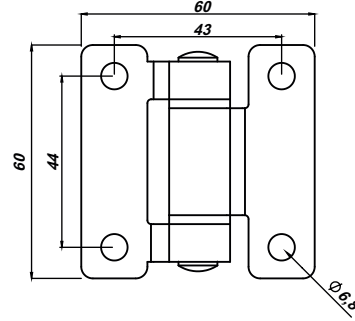
MY6060.2.1.4

YAPRAK MENTEŞE (60*60mm-Çinko Kap.-Delikli)
LEAF HINGE (60*60mm-Zinc Plated-Hole)



MY6060.2.5.4

YAPRAK MENTEŞE (60*60mm-Boyalı-Delikli)
LEAF HINGE (60*60mm-Black Coated-Hole)



Kullanım Alanları

- * Jeneratör Kabinleri
- * Kompresör Kabinleri
- * Elektrik Panoları
- * Makine Kapakları

Malzeme

- * Gövde: St 37 Çelik Levha
- * Pim :Paslanmaz Çelik (AISI 304)
- * Kaplama: 1=Çinko Kaplama
5=Boyalı

Applications

- * Generator Cabinets
- * Compressor Cabinets
- * Electric Panels
- * Machinery Covers

Material

- * Body: Steel St 37
- * Pin : Stainless Steel (AISI 304)
- * Finish: 1=Zinc Plated
5=Black Coated

